







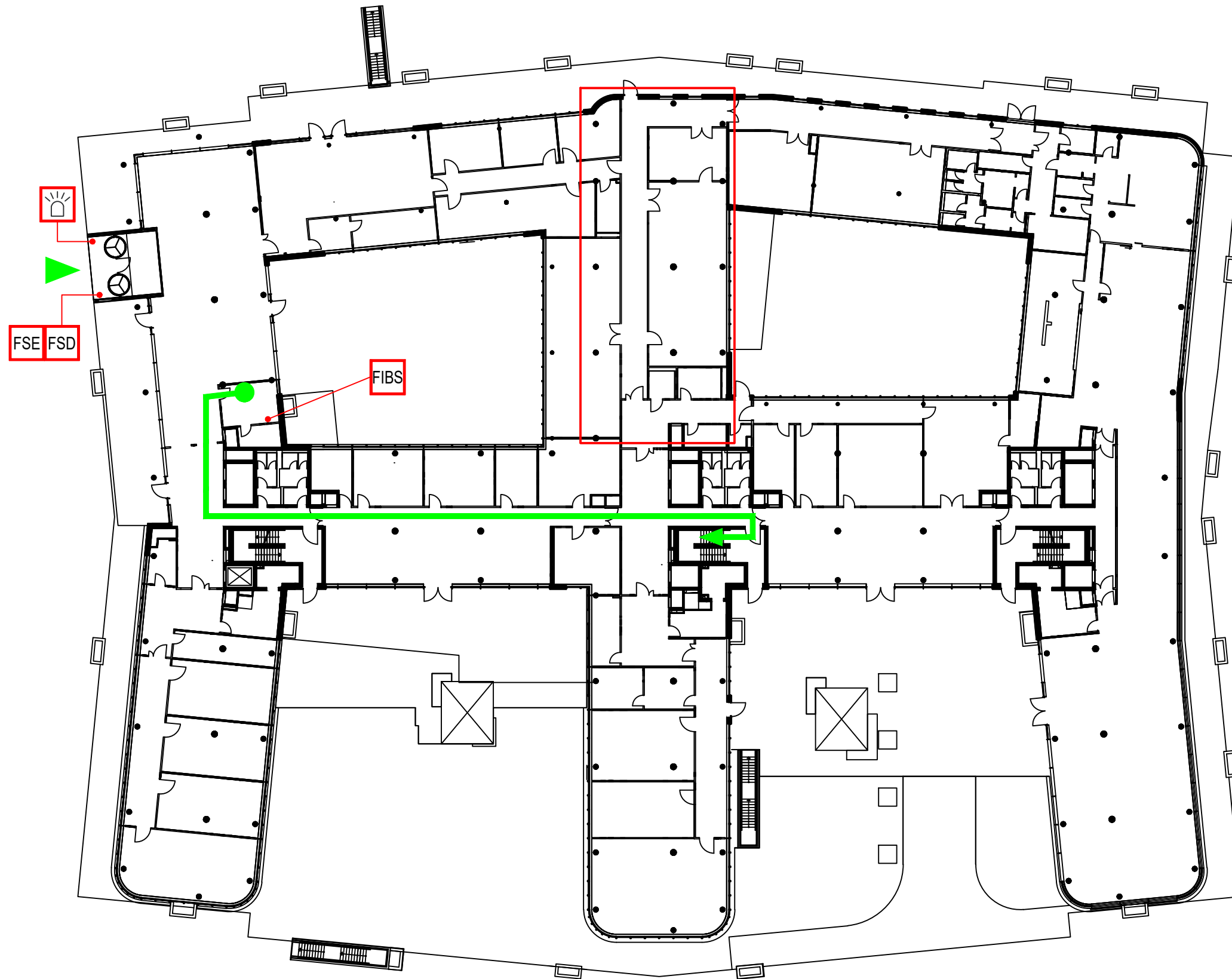




222

Meldergruppe: 222	Gebäude: Bürogebäude	Geschoss/Flur: 2.OG	Raum: Büro	Melderanzahl: 11	Melderart: Optischer Melder	Bemerkungen:
----------------------	-------------------------	------------------------	---------------	---------------------	--------------------------------	--------------

Legende

-  Standort
-  Einsatzweg
-  Zugang für Einsatzkräfte
-  FIBS
Feuerwehr-
Information- und
Bediensystem
-  Blitzleuchte
-  FSE
Freischaltelelement
-  FSD
Feuerwehr-
Schlüsseldepot
-  Meldebereich

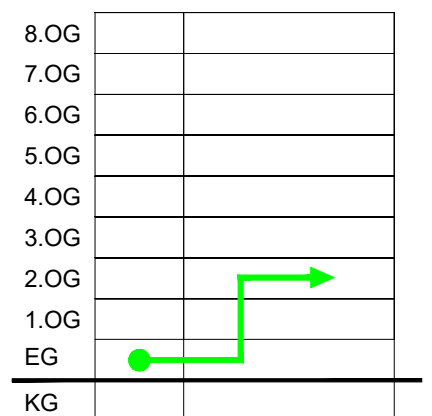
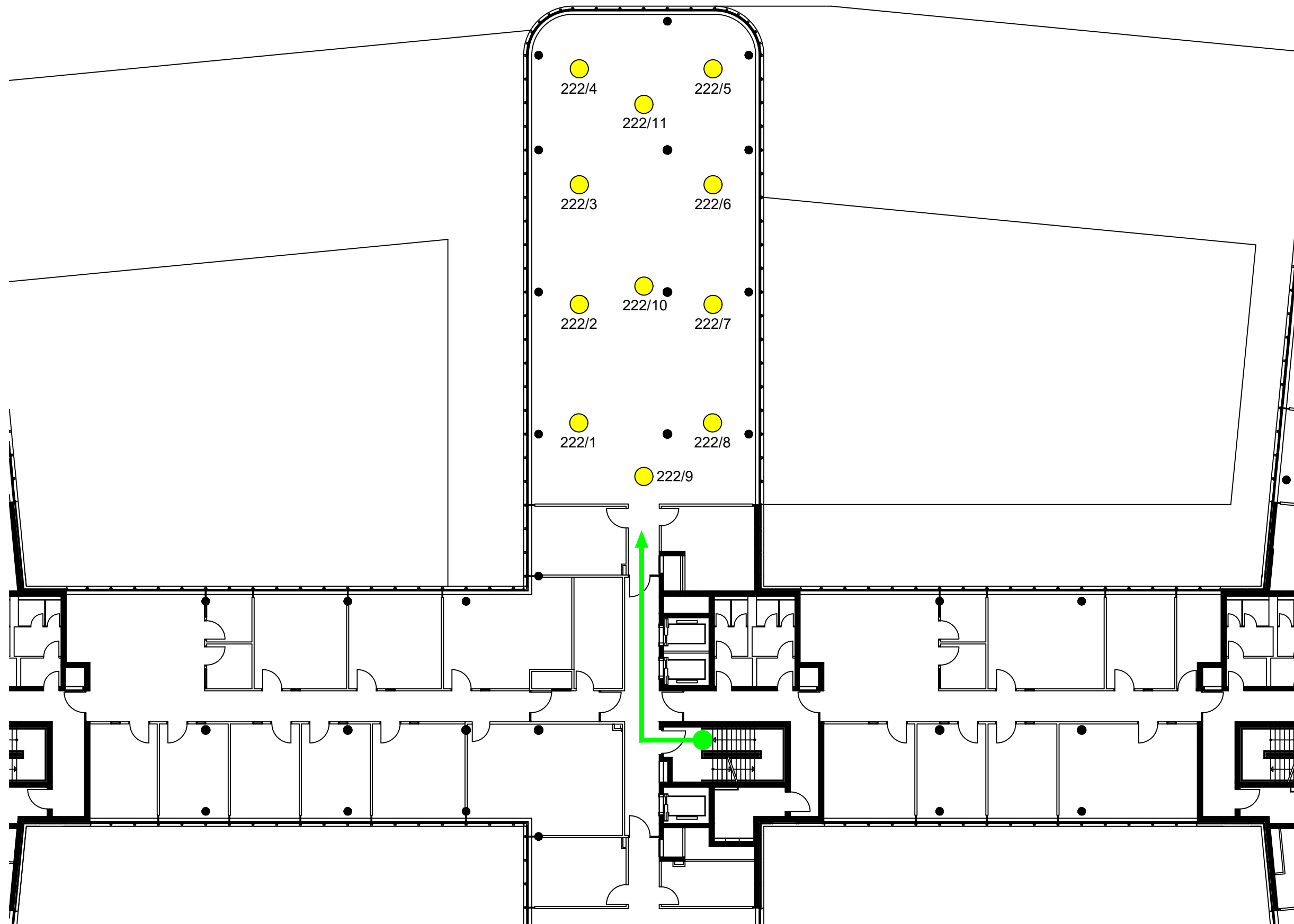


8.OG		
7.OG		
6.OG		
5.OG		
4.OG		
3.OG		
2.OG		
1.OG		
EG		
KG		

Meldergruppe: 222	Gebäude: Bürogebäude	Geschoss/Flur: 2.OG	Raum: Büro	Melderanzahl: 11	Melderart: Optischer Melder	Bemerkungen:
----------------------	-------------------------	------------------------	---------------	---------------------	--------------------------------	--------------

Legende

- Standort
- Einsatzweg
- Automatischer Melder



Weih's CAD Zeichenbüro
 Bergers Kamp 1, 48739 Legden
 Tel.: 02566 - 93 38 750
 www.cad-weih's.de